



5330 East 25th Street
Indianapolis Indiana 46218
(888) 445-4142
www.tepid.com

ANSI/ISEA Z358.1 Certified
Patent Information:
tepid.com/patents

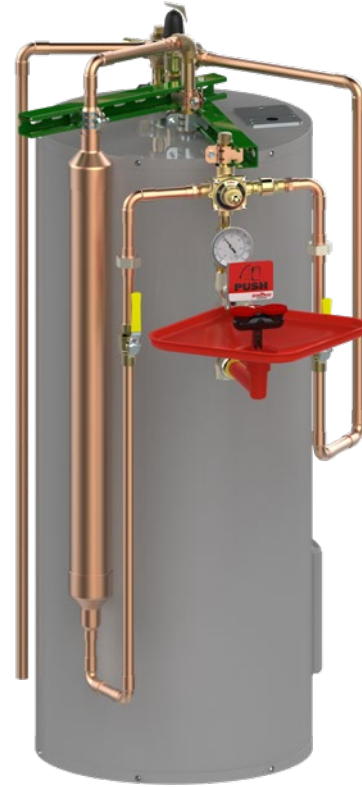
Stingray Systems

S9200

Tepid Emergency Eye/Face Wash System

The S9200 Tepid Emergency Eye/Face Wash System shall consist of a water heater storage tank and 120V 20AMP heating element. The S9200 Tepid Emergency Eye/Face Wash System shall incorporate an emergency mixing valve capable of controlling outlet temperature over a wide range of demand requirements. The mixing valve shall employ a liquid-filled thermostatic motor and a stainless steel sliding piston control device. The valve shall offer positive hot water shut-off in the event of cold water supply loss and full flow cold water bypass in the event of hot water supply loss or thermostatic failure. The system shall also incorporate a device capable of flattening temperature spike through the system as well as a heat trap to prevent heat migration to the cold side of the mixing valves. Unit supplied complete with pre-piped 40 gallon storage tank, 120V 20AMP heating element, patented accumulator, a SV107 Emergency Mixing Valve. The hot water tank is UL listed, heating element is CSA approved. Unit shall be supplied with Series 2000 Stingray Emergency Eye/Face Wash. The unit can be a stand alone unit or if a wall mounted unit is chosen, the unit can be attached to the tank at the factory prior to shipment.

This system, combined with a Stingray Emergency Eye/Face Wash is a complete tepid solution that is ANSI/ISEA Z358.1 compliant. Please select the correct fixture per the application.



Series: S9200

Equipment Options:

Stingray Series 2000 - Wall Mounted Eye/Face System

- 2530 Standard Configuration Eye/Face Wash Mounted To The Tank
- 2535 Barrier Free Configuration Eye/Face Wash Mounted To The Tank
- 2530 Standard Configuration Eye/Face Wash To Be Mounted To The Wall
- 2535 Barrier Free Configuration Eye/Face Wash To Be Mounted To The Wall

Stingray Series 2000 - Pedestal Mounted Eye/Face System

- 2510 Standard Configuration Eye/Face Wash
- 2515 Barrier Free Configuration Eye/Face Wash

Cold Water Filter:

- Please Specify: _____

Please see the individual specification sheets for the fixtures for all of the options available for the selected fixture.



5330 East 25th Street
Indianapolis Indiana 46218
(888) 445-4142
www.tepid.com

Model: S9200

ANSI/ISEA Z358.1 Certified
Patent Information:
tepid.com/patents

