



5330 East 25th Street
Indianapolis Indiana 46218
(888) 445-4142
www.tepid.com

ANSI/ISEA Z358.1 Certified
Patent Information:
tepid.com/patents

Stingray Systems **S2230/S2235** Wall Mounted Eyewash

The S2230/S2235 emergency eyewash is a wall mounted unit that shall be manufactured of corrosion resistant materials. The manifold assembly shall be a nickel plated brass unit with 1" NPT female connections for inlet and drain piping. It shall include a centrally located activator with universal ANSI compliant sign.

The bowl assembly shall include a First Aid Red ABS (or stainless steel bowl). The spray heads shall be PVC with dust caps and incorporated into a Quick Switch Eyewash Block that can be easily removed and serviced, allowing the supply piping to be flushed. The Quick Switch Eyewash Block (with optional integral point of use filters) shall be a single supply source eyewash unit to ensure symmetrical and equal flow through each spray head. The eyewash will come complete with nickel-plated inlet pipe and epoxy coated wall mount bracket. The eyewash shall be installed at the correct elevation per ANSI/ISEA Z358.1, be level and be self draining to hinder bacteria growth. The eyewash shall also be independently certified to meet the latest ANSI/ISEA Z358.1 requirements.

As an eyewash, this unit will have a regulated flow rate of less than 3 gpm measured at 30 psi.



Series: S2230/S2235

Model Number:

- S2230 Wall Mounted Standard Eyewash
- S2235 Wall Mounted Barrier-Free Eyewash

Quick Switch Eyewash Block Options:

- Filter 70 Micron (FLT)
- No Filter (NFT)

Bowl Material Options:

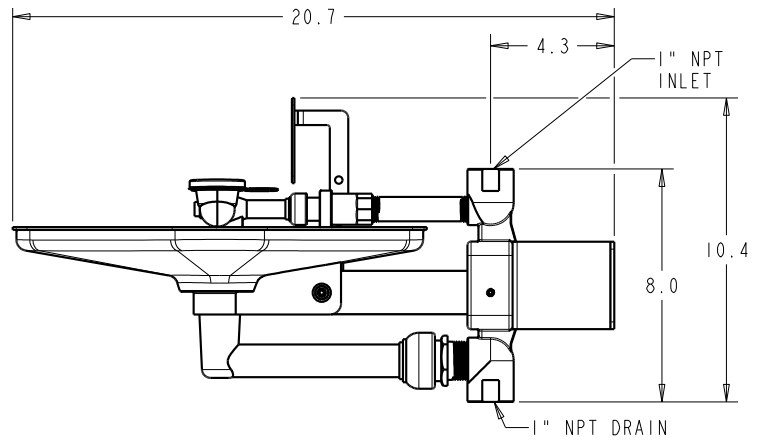
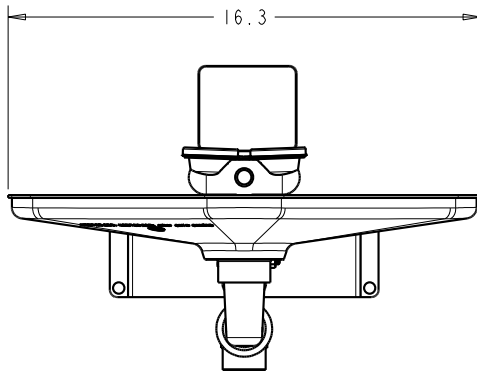
- First Aid Red ABS (AB/NA)
- Stainless Steel (SS/NA)

For a complete **TEPID** solution, this fixture shall be combined with a Stingray SV107 emergency mixing valve.

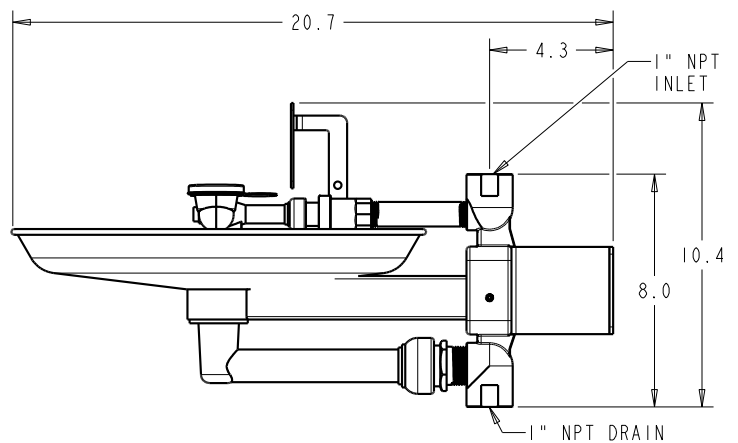
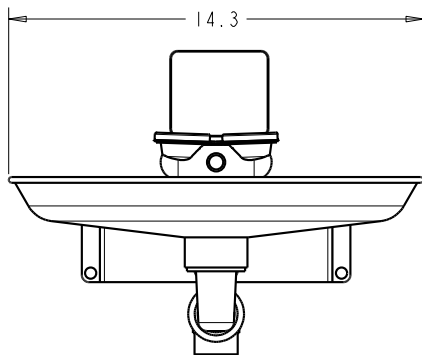


5330 East 25th Street
Indianapolis Indiana 46218
(888) 445-4142
www.tepid.com

ANSI/ISEA Z358.1 Certified
Patent Information:
tepid.com/patents



Model: S2230 ABS

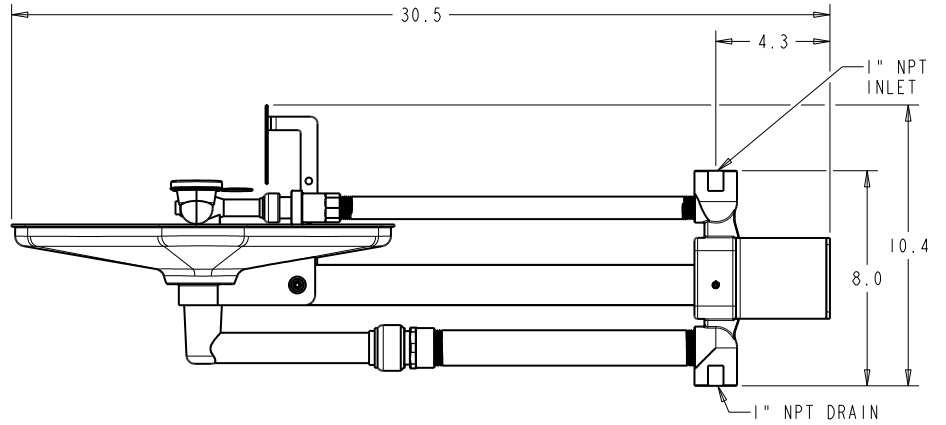
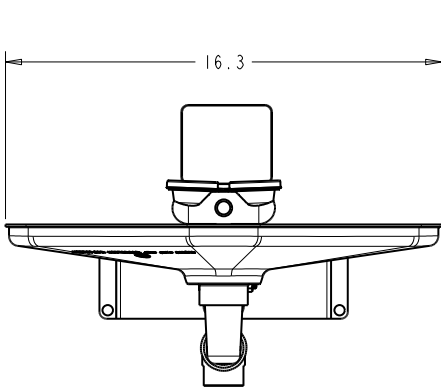


Model: S2230 SS

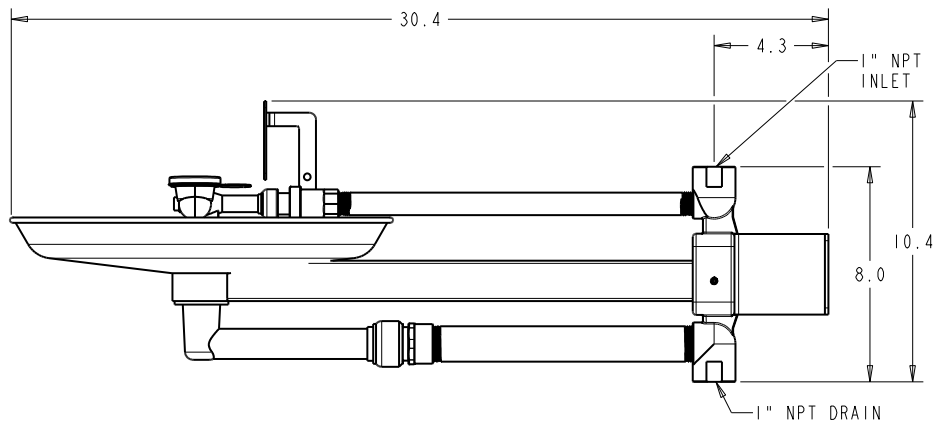
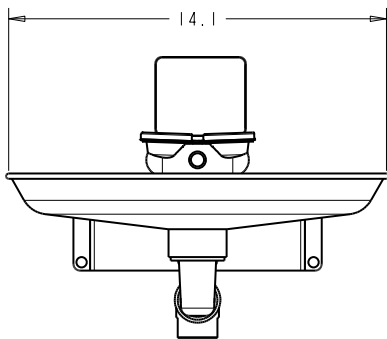


5330 East 25th Street
Indianapolis Indiana 46218
(888) 445-4142
www.tepid.com

ANSI/ISEA Z358.1 Certified
Patent Information:
tepid.com/patents



Model:
S2235 ABS



Model:
S2235 SS